

CL-1000i

Chemiluminescence Immunoassay System



Von-Langen-Weg 10
48565 Steinfurt / Germany
Tel.: 02551/2097
Fax: 02551/80883
E-Mail: info@keul.de
Internet: www.keul.de

mindray
healthcare within reach

CL-1000i

Chemiluminescence Immunoassay System



Simple yet Rob



Enhanced Reaction System

4-phase magnetic separation with precisely controlled temperature
Consistent performance reliability with enhanced PMT detection system
Non-touch vortexer mixing for reaction solution without any contamination



Sample & Reagent Probe

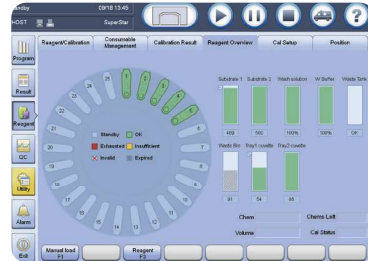
Precisely controlled syringe motors offer high precision aspiration
Intelligent liquid level detection, clot detection, vertical and horizontal collision protection
Efficient interior & exterior probe wash with high pressure wash buffer
Programmable enhanced probe wash with detergent



Sample Handling

Samples loading and offloading continuously by sample racks
Unified sample racks with detachable adaptor
Rack status real-time indicating on lane numbers
STATs prioritized fast

Robust



Intuitive Software Interface

Unified software interface, significantly reduces training effort
Smooth interchange by intuitive software navigation
Easy access to touch screen monitor with swing arm (optional)



Consumables Management

Random access for cuvette loading without pause or stop
88*2 cuvettes in one batch, 185 cuvettes per waste bag
Cuvettes & waste bag status real-time indicating



Reagent & Substrate Handling

Easy for reagent & substrate handling, liquid reagents ready-to-use
2°C~8°C non-stop refrigerated reagent carousel featured 25 positions
Same reagent pack size with CL-2000i (50 tests/100 tests per pack)
Reagents stable on board for up to 56 days



Test Menu

Thyroid

FT3
FT4
T3
T4
TSH
Anti-TG
Anti-TPO
Thyroglobulin (TG)
TRAB *
rT3 *

Down's screening

PAPP-A *
Free β -HCG *

Infectious Disease

HBsAg
Anti-HBs
HBeAg
Anti-HBe
Anti-HBc
HIV combo
Anti-HCV
Anti-TP
Anti-HBc IgM *
HBeAg quantitative *

Fertility

Total β -HCG
FSH
LH
Prolactin
E2
E3
TESTO
PROG
Free testosterone *
17-OH PROG *
SHBG *

Growth hormone

hGH *
IGF-1 *
AMH *

Cardiac

CK-MB
Myoglobin
Troponin I
BNP
Angiotensin I *
Angiotensin II *
Renin *
Aldosterone *

Metabolic

Intact PTH
Calcitonin
Vitamin D total
Ferritin
Vitamin B12
Folate
RBC Folate

Diabetes

Insulin
C-peptide

Others

ACTH
DHEA-S
Cortisol

Liver fibrosis

LN *
HA *
PIIINP *
C IV *

*To be launched

■ CE pending

Tumor Marker

CEA
AFP
CA125
CA15-3
CA19-9
FPSA
TPSA
NSE
CYFRA 21-1
CA72-4
ProGRP *
PG I *
PG II *
SCCA *
HE4 *
CA242 *
CA50 *

Inflammation

PCT *

CL-1000i

Chemiluminescence Immunoassay System

Technical Specifications

General Information

Throughput Up to 120 tests/hour
Measurement Principle Micron superparamagnetic particles platform with alkaline phosphatase (ALP) labeled reagents and AMPPD substrate

Sample Assembly

Sample Feeder Continuous sample loading and offloading by sample racks
Sample Rack 10 positions per rack, same as BS-800/BS-2000/CL-2000i series
Sample Capacity Up to 60 samples in one batch
Sample Probe Steel probe, liquid level detection, clot detection, horizontal and vertical collision protection
Sample Volume 10 μ l~200 μ l, with increment of 1 μ l
Sample Dilution Automatic dilution with 1:2 ~ 1:40

Reagent Assembly

Reagent Disk 25 reagent positions, continuous loading, real-time mixing for magnetic particles
Cooling System 2°C~8°C
Reagent Pack 50 tests per pack, 100 tests per pack
Reagent Scanning Built-in/external bar code reader scanning
Reagent Probe Steel probe, liquid level detection, bubble detection, horizontal and vertical collision protection
Reagent Volume 20 μ l~200 μ l, with increment of 1 μ l

Substrate System

Substrate Bottle 250/500 tests per bottle, bottom piercing
Substrate Loading Capable of continuous loading during testing
Substrate Heating Constant heating
Aspiration Volume 200 μ l

Magnetic Separation Unit

Separation Assembly 4-phase magnetic separation
Temperature Accuracy: 37 \pm 0.3°C, fluctuation: \pm 0.2°C

Measurement and Reaction System

Detection Mode Photon counting
Signal Detector Photomultiplier (PMT) photon counter
PMT Calibration LED reference module
Reaction Carousel 75 positions
Temperature Accuracy: 37 \pm 0.3°C, fluctuation: \pm 0.2°C
Mixing Unit Non-touch vortexer mixing

Cuvette Loading and Waste Collection

Cuvette Disposable plastic cuvette
Cuvette Loading 88 cuvettes per tray, two trays can be loaded in one batch, continuous loading and offloading
Waste Collection Waste container, 185 cuvettes per box

Working Conditions

Power Supply 110V/115V~, 60Hz; 220V-240V~, 50Hz; 220V/230V~, 60Hz
Input Power 2000VA
Operating Temperature 15°C~30°C
Relative Humidity 35%RH~80%RH, without condensation
Dimension Main Unit: 1400mm*760mm*600mm (W*D*H)
Weight: 225kg
Altitude Height -400m~4000m

Mindray Building, Keji 12th Road South,
High-tech Industrial Park, Nanshan, Shenzhen 518057, P.R. China
Tel: +86 755 8188 8998 Fax: +86 755 26582680
E-mail: intl-market@mindray.com www.mindray.com

mindray are registered trademarks or trademarks owned by Shenzhen Mindray Bio-medical Electronics Co., LTD.
©2015 Shenzhen Mindray Bio-Medical Electronics Co., Ltd. All rights reserved. Specifications subject to changes without prior notice.
P/N: ENG-CL1000i-21285x6-20160923

mindray



Von-Langen-Weg 10
48565 Steinfurt / Germany
Tel.: 02551/2097
Fax: 02551/80883
E-Mail: info@keul.de
Internet: www.keul.de